

## *560 Series DISS Medical Gas Outlets*

### Elements

- Safety keyed to help prevent cross-connections
- Conforms to NFPA 99 and CGA/DISS standards
- Modular design
- Cleaned for oxygen service
- UL listed



### Description

The Chemetron® 560 Series DISS outlet stations provide convenient access to medical gases in patient care locations. They are fully compatible with DISS style diameter indexed threaded adapters.

The outlets are field-gangable in any order desired by the facility. Outlets are spaced 5" (12.7 cm) center to center, and may be ganged with Chemetron modular electrical assemblies in a console arrangement. Outlet finish plates and rough-in plates are pin indexed using steel pins for positive cross-connection prevention. Primary valves are made of brass, chrome-plated, and contain a self-sealing poppet. Primary valves are field adjustable to compensate for variations in plaster thickness of 1/2" to 3/4". Outlets may be special ordered with extended valve bodies that allow for an additional 3/8" or 3/4" adjustment.

The type K copper inlet tube has a 1/2" OD connection, and can rotate 360 degrees to accommodate any field piping arrangement.



**560 Series DISS Medical Gas Outlet**

The primary gas check can be serviced without shutting off the gas supply.

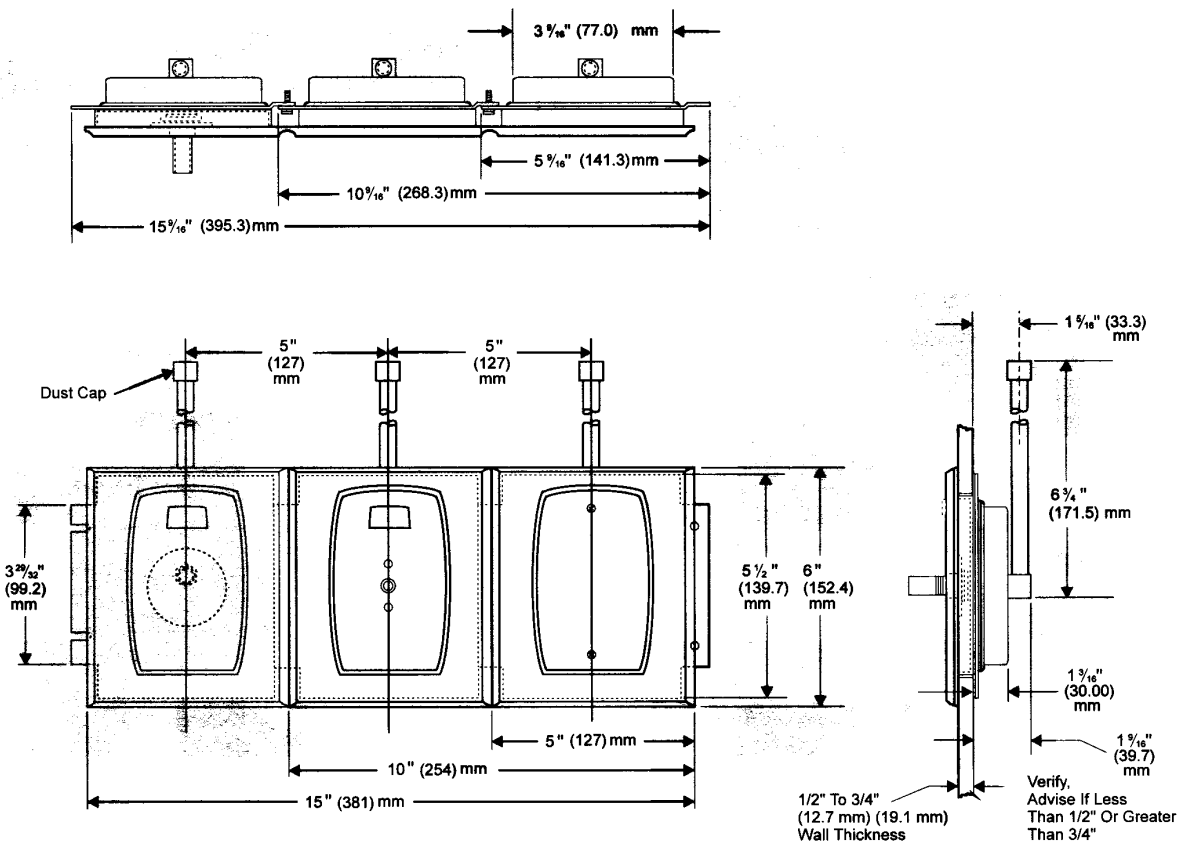
The outlet stations are fully compliant with NFPA 99 1999, CGA V-5 and CSA Z-305, and are cleaned for oxygen service in accordance with CGA G-4.1. The outlet is UL listed. Rough-in plates for the outlets are zinc plated steel for corrosion resistance and fire safety. Finish plates are die-cast zinc, chrome-plated with brushed stainless dress plate for appearance. Gas identification is provided by a polycarbonate plastic insert, color-coded by gas service.

Vacuum outlets may be used with or without slide brackets for vacuum collection bottles of up to 1/2-gallon capacity. (Where slide brackets are used, order one per vacuum outlet.)

**Ordering Information**

Gas Service	Catalog Number U.S. Color Codes	Quantity	Catalog Number ISO Color Codes	Quantity
Oxygen	64-04-5601		64-04-5651	
Vacuum	64-04-5602		64-04-5652	
Air	64-04-5603		64-04-5653	
Nitrous Oxide	64-04-5604		64-04-5604	
Evacuation Vacuum	64-04-5606		64-04-5606	
Carbon Dioxide	64-04-5607		64-04-5607	
Oxygen/CO2 (CO2 less than 7%)	64-04-5608		64-04-5658	
Slide Bracket	64-06-0001		64-06-0001	
Nitrogen	64-04-5605		N/A	

**Dimensional Data**



**Refer to installation instructions prior to assembly.**



*560 Series DISS Medical Gas Outlets*

All specifications are nominal and subject to change without notice.

Warranty:  
See Allied Statement of Warranties for details.

© 2005 Allied Healthcare Products, Inc.® Printed in USA

*Customer Service:*

USA: (800) 444-3960

FAX: (314) 771-7537

Canada/Mexico: (800) 446-0552

FAX: (800) 246-6201

International: (314) 268-1683

FAX: (314) 771-5183



1720 Sublette Avenue  
St. Louis, MO 63110 USA  
(314)771-2400

[www.alliedhpi.com](http://www.alliedhpi.com)

**ISO 9001 CERTIFIED**

*Product Specification*